

FPPL FORMER

FORM ROUND IC PACKAGES TO VARIOUS BOLT CIRCLES

Reform Round TO Packages to Different Bolt Circles

Form 3, 6, 8, 10 Pin Packages to Same or Different Bolt Circles

Cam Tooling Restricts Leads

Tooling available for a variety of packages.

Quick change tooling is easy to operate.

Cams act as restrictors, eliminating component damage.

Complete Tooling Packages

Each component package includes a lead spreader, cam tooling, and a spring loaded forming punch.

Base machine includes cast base with 360 degree viewing platform.

Spreader nest ease set-up.

Includes

Base machine with 360 deg. viewing.

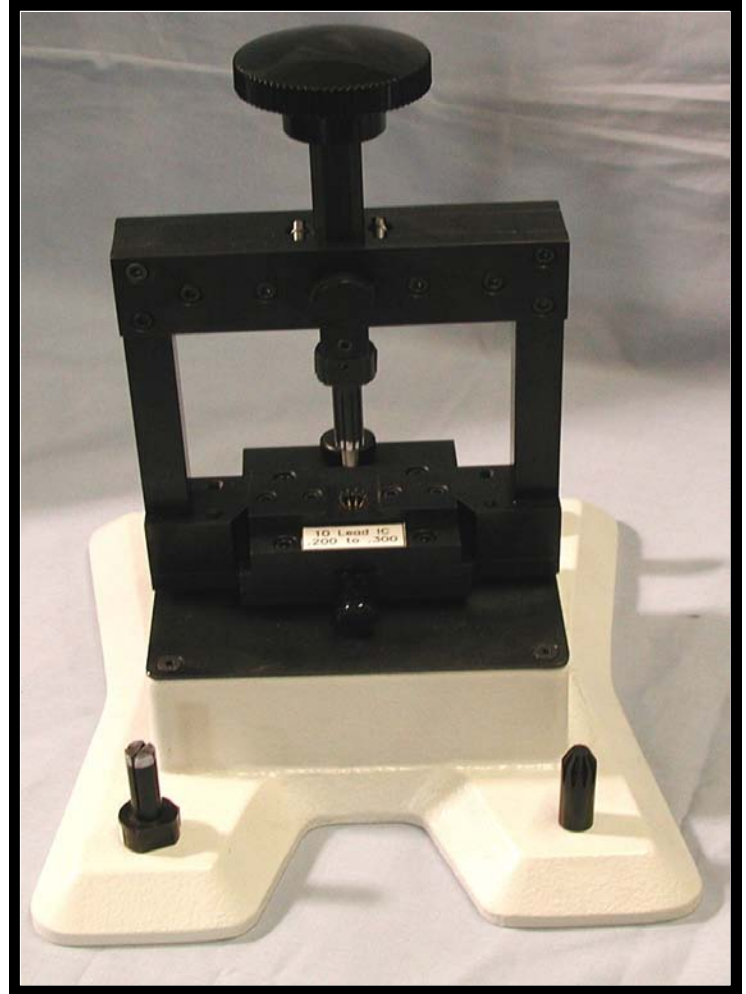
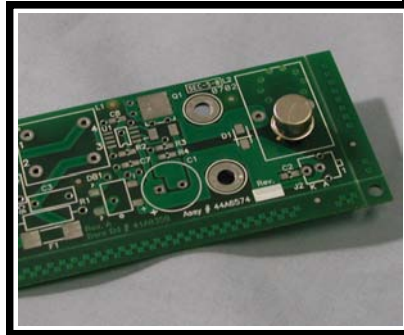
Cam tooling for each package.

Spring loaded machined punches.

Spreader anvils.

Easy-to-use operation.

Form the leads to the proper hole spacing and to a uniform stand-off height of 0.125". Cutting systems, either by machine or hand, are available to ease insertion.



The FPPL press and tooling is designed to form round TO packages to different bolt circles or even to a square or rectangular pattern. All leads are restricted during the forming operation, eliminating component lead to body damage. Tooling is easily changed for various pin counts. All tooling is manufactured in our Feasterville, PA manufacturing facility.



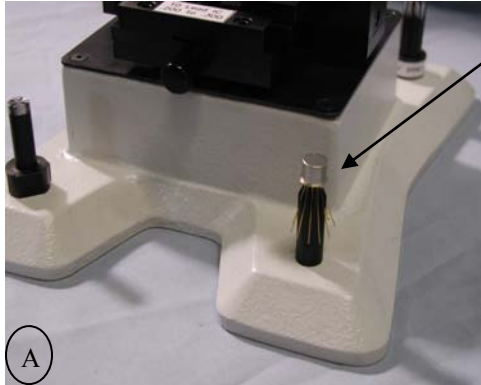
1560 Loretta Avenue • Feasterville, PA 19053 • USA

Phone (215) 953-9797 • Fax (215) 953-9399

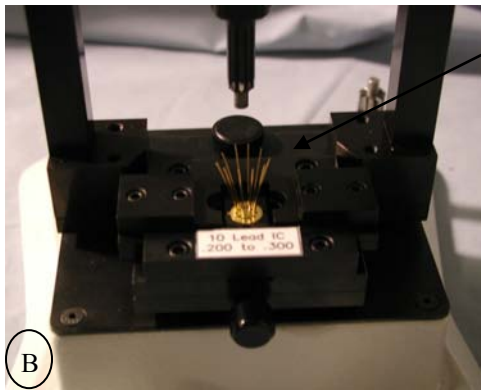
Email: sales@manixmfg.com • Visit us at: www.manixmfg.com

FPPL FORMING TOOL

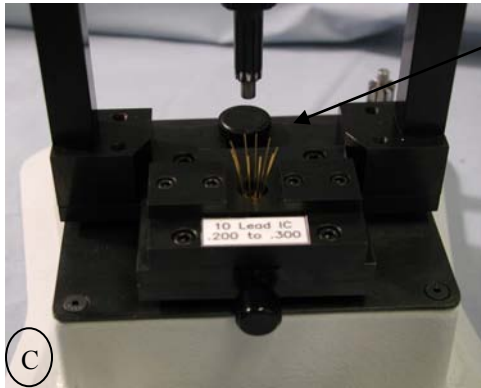
METHOD OF OPERATION



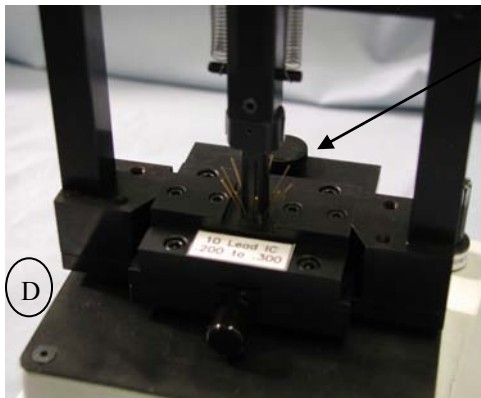
A. Place the component over the correct spreader and gently push down to spread the leads. This operation spreads the leads for the forming tool. You receive a spreader for each pin count.



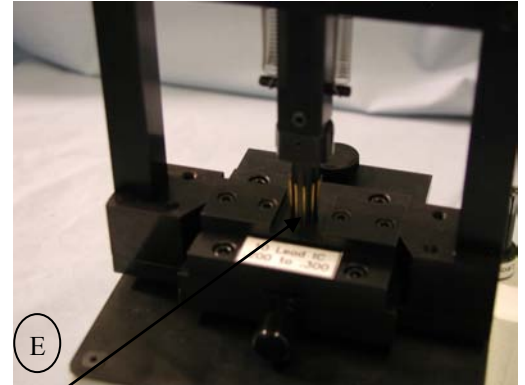
B. Place the spread component leads up into the correct forming tool. The tool has a component tab locator for proper orientation. Make sure the correct punch is installed. Each component is supplied with a forming punch and cam tooling. The cam tooling restricts the leads and ensures no lead to body damage.



C. Push the small black knob towards the back of the machine. The cams will activate, restricting the outer leads, ensuring no damage. The cams and the punch will restrict the component leads during the forming process.



D. Push the large black knob on the top of the machine until the punch rest just inside the spread leads. Lock the punch in place by the small thumbscrew on the front of the machine. The top portion of the entire tool rotates 360 deg. for lead viewing. Rotate the black knob and make sure that the spread leads are inline with the slotted punch.



E. Once all the leads are aligned to the punch, loosen the black thumbscrew and continue to push down on the large black knob until all leads are formed. The punch is spring loaded and will not cause damage. The component is now formed. Release the large top black knob. Pull the small black knob towards you to release the cams and free the component. Gently remove the formed component.



F. Forming tools are available for a variety of packages. Choose from 3, 6, 8, 10, even 12 pin cans. Form to different bolt circles or even to a DIP configuration. Each tool includes cam tooling, a spring loaded forming punch and a pin count dependent spreader. Tooling is typically made of O1 tool steel which is hardened, ground, and blackened. All manufacturing is done on premises by skilled toolmakers.